

DRAWING NUMBER
48/23

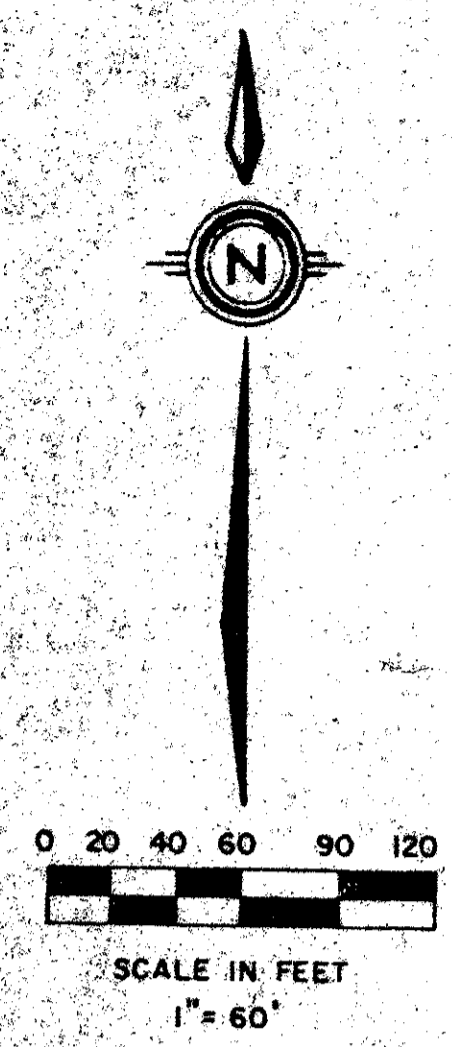
BOCA WOODS COUNTRY CLUB PLAT 4

A PART OF BOCA WOODS COUNTRY CLUB, A P.U.D.
SITUATE IN SECTIONS 23 AND 24, TOWNSHIP 47 SOUTH, RANGE 41 EAST,
PALM BEACH COUNTY, FLORIDA, BEING A REPLAT OF A PORTION OF
FLORIDA FRUIT LANDS COMPANY'S SUBDIVISION NO. 2,
AS RECORDED IN PLAT BOOK 1, PAGE 102.

23

STATE OF FLORIDA
COUNTY OF PALM BEACH
THIS PLAT WAS FILED FOR
RECORD AT _____
THIS _____ DAY OF _____
AD, 1984 AND DULY RECORDED
IN PLAT BOOK _____ ON PAGES
_____ AND _____
JOHN B. DUNKLE, CLERK
CIRCUIT COURT
BY: _____, D.C.

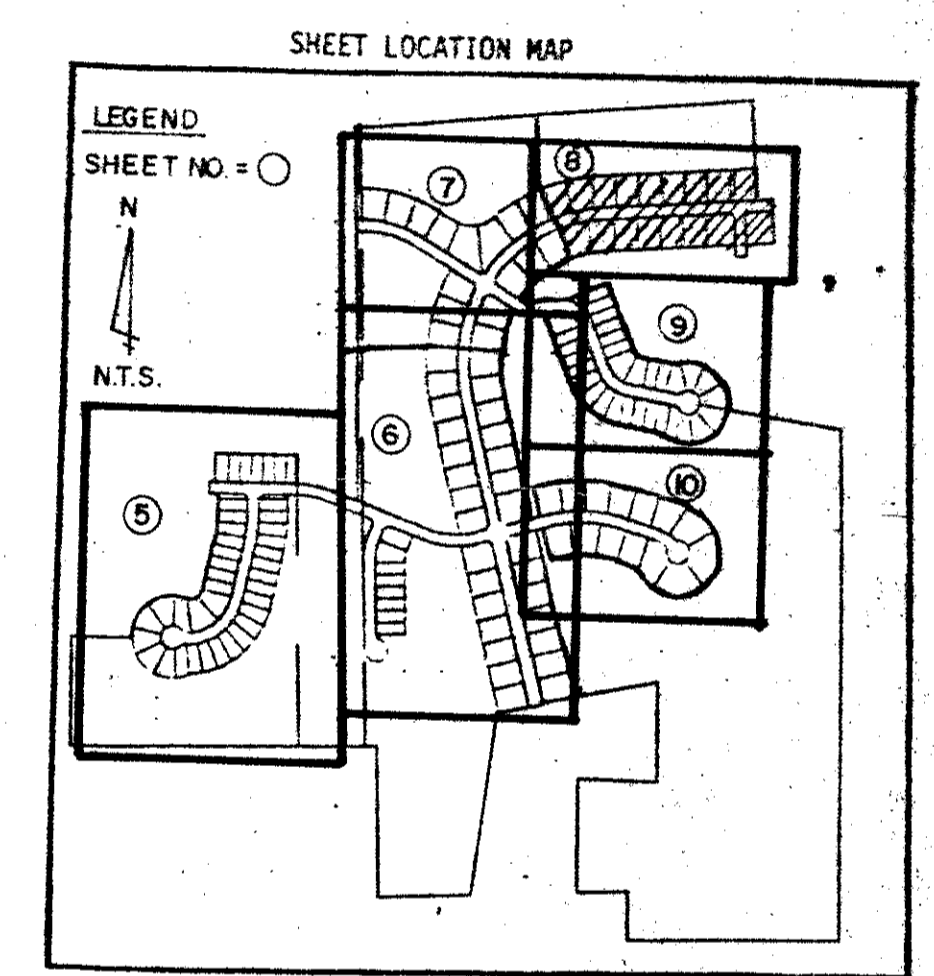
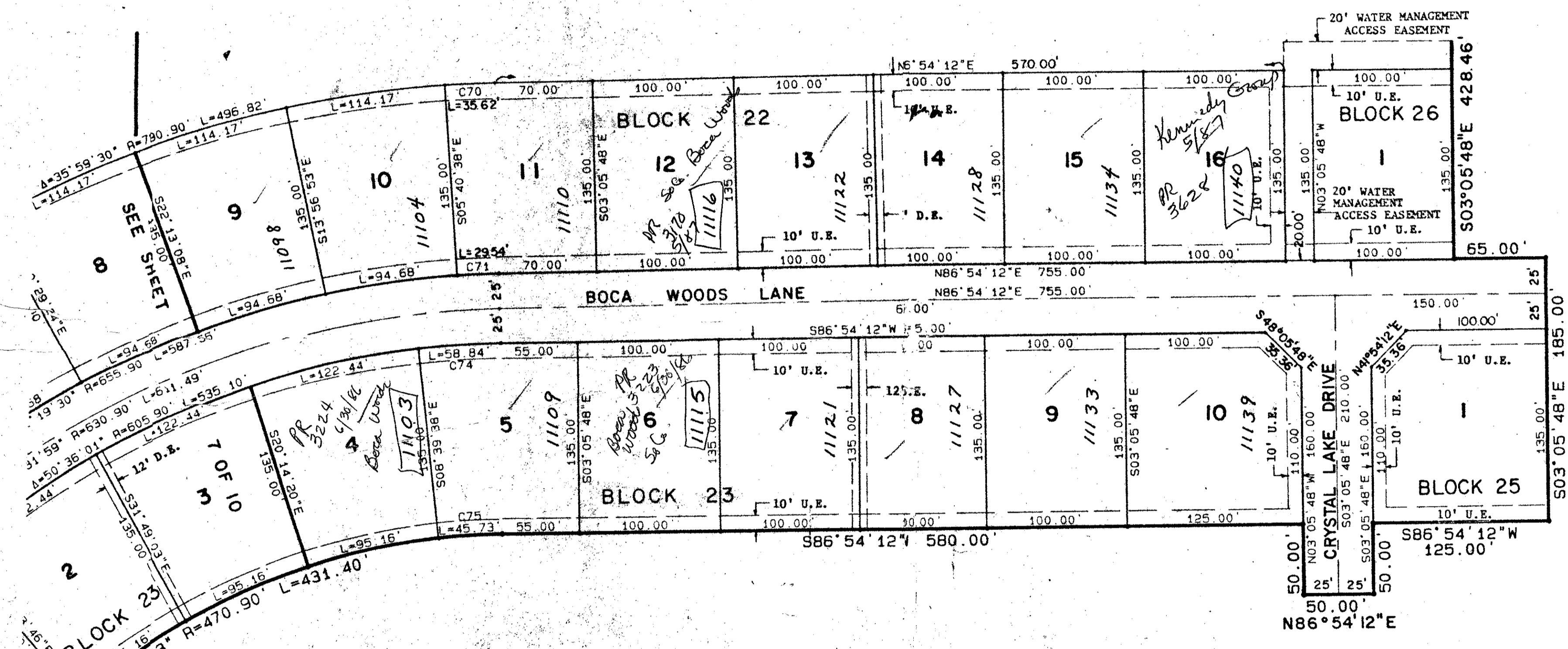
SHEET 8 OF 10



DRAWING NUMBER

DRAWING NUMBER

DRAWING NUMBER



NO.	DELTA	RADIUS	LENGTH	NO.	DELTA	RADIUS	LENGTH	NO.	DELTA	RADIUS	LENGTH	NO.	DELTA	RADIUS	LENGTH	NO.	DELTA	RADIUS	LENGTH	NO.	DELTA	RADIUS	LENGTH	NO.	DELTA	RADIUS	LENGTH					
C1	3° 33' 43"	354.32	16.26	C24	60° 08' 08"	25.00	26.22	C47	16° 11' 22"	158.85	56.19	C70	2° 34' 50"	790.90	35.62	C93	16° 35' 37"	36.08	10.45	C116	11° 17' 42"	250.00	49.28	C139	11° 32' 13"	25.00	25.00	5.03				
C2	90° 00' 00"	25.00	39.27	C25	19° 02' 17"	148.85	49.46	C48	6° 50' 52"	251.43	51.24	C71	2° 34' 50"	655.90	29.54	C94	46° 20' 16"	119.32	96.50	C117	19° 49' 38"	175.00	60.56	C140	23° 45' 29"	120.00	49.74	120.00				
C3	90° 00' 00"	25.00	39.27	C26	90° 00' 00"	25.00	39.27	C49	6° 20' 08"	565.88	82.57	C72	10° 18' 03"	505.30	108.93	C95	44° 24' 23"	36.08	26.07	C118	27° 53' 24"	50.00	24.34	C141	44° 05' 53"	55.00	42.33	55.00				
C4	22° 55' 10"	271.64	108.66	C27	3° 17' 06"	29.99	1.72	C50	6° 20' 08"	700.88	77.50	C73	12° 11' 25"	470.30	100.19	C96	11° 40' 32"	150.72	54.21	C119	1° 44' 28"	250.00	7.60	C142	44° 05' 53"	55.00	42.33	55.00				
C5	73° 23' 54"	20.00	25.62	C28	3° 39' 49"	254.32	18.88	C51	5° 34' 15"	565.88	55.02	C74	5° 33' 50"	305.30	58.84	C97	20° 36' 30"	150.72	72.86	C120	38° 56' 18"	50.00	33.98	C143	22° 55' 10"	96.64	38.66	96.64				
C6	22° 55' 10"	271.64	108.66	C29	39° 00' 00"	112.96	76.89	C52	5° 34' 15"	700.88	68.15	C75	5° 33' 50"	170.90	45.73	C98	27° 41' 51"	150.72	72.86	C121	38° 56' 31"	50.00	33.98	C144	22° 55' 10"	96.64	38.66	96.64				
C7	90° 00' 00"	25.00	39.27	C30	22° 55' 10"	246.64	98.66	C53	6° 05' 11"	470.30	54.36	C76	74° 43' 26"	100.72	131.35	C99	22° 55' 10"	96.64	38.66	C122	38° 56' 31"	175.00	60.56	C145	22° 55' 10"	96.64	38.66	96.64				
C8	90° 00' 00"	25.00	39.27	C31	11° 07' 54"	389.73	75.72	C54	6° 05' 11"	470.30	111.40	C78	2° 16' 34"	00.72	4.00	C100	22° 55' 10"	96.64	38.66	C123	38° 56' 31"	50.00	33.98	C146	22° 55' 10"	96.64	38.66	96.64				
C9	90° 00' 00"	25.00	39.27	C32	3° 17' 06"	29.99	1.72	C55	12° 25' 25"	470.30	102.11	C79	13° 36' 42"	69.32	40.23	C101	11° 32' 13"	25.00	5.03	C124	38° 56' 31"	50.00	33.98	C147	22° 55' 10"	96.64	38.66	96.64				
C10	56° 47' 46"	25.00	24.78	C33	3° 17' 06"	29.99	75.92	C57	1° 18' 37"	655.90	88.48	C81	2° 13' 12"	69.32	6.56	C104	4° 36' 57"	595.86	48.00	C128	5° 26' 43"	200.00	19.01	C148	22° 55' 10"	96.64	38.66	96.64				
C11	90° 00' 00"	25.00	39.27	C34	8° 25' 54"	380.88	55.95	C60	5° 58' 57"	655.90	88.48	C82	2° 13' 12"	69.32	6.56	C105	4° 36' 57"	595.86	48.00	C129	5° 26' 43"	200.00	19.01	C149	22° 55' 10"	96.64	38.66	96.64				
C12	90° 00' 00"	25.00	39.27	C35	8° 25' 54"	380.88	55.95	C61	11° 30' 25"	463.85	93.16	C84	20° 21' 00"	20.00	11.40	C106	4° 36' 57"	595.86	48.00	C130	5° 26' 43"	200.00	19.01	C150	22° 55' 10"	96.64	38.66	96.64				
C13	90° 00' 00"	25.00	39.27	C36	8° 25' 54"	380.88	55.95	C62	9° 16' 00"	598.85	96.86	C85	16° 05' 25"	75.00	49.15	C108	0° 55' 20"	720.86	11.60	C131	47° 09' 23"	50.00	41.15	C151	22° 55' 10"	96.64	38.66	96.64				
C14	88° 56' 53"	25.00	39.27	C37	25° 49' 20"	89.00	47.56	C63	9° 16' 00"	598.85	75.02	C86	1° 28' 36"	20.00	3.09	C109	0° 55' 20"	720.86	11.60	C132	32° 02' 14"	200.00	111.83	C152	22° 55' 10"	96.64	38.66	96.64				
C15	90° 00' 00"	25.00	39.27	C38	8° 25' 54"	380.88	55.95	C64	3° 29' 39"	157.09	87.39	C88	46° 35' 53"	50.00	40.66	C110	0° 55' 20"	595.86	9.59	C133	3° 05' 50"	420.86	22.75	C153	22° 55' 10"	96.64	38.66	96.64				
C16	90° 00' 00"	25.00	39.27	C39	54° 30' 08"	55.00	24.79	C64	11° 30' 25"	463.85	19.41	C89	16° 44' 12"	20.00	35.05	C111	3° 12' 41"	375.00	14.01	C135	6° 21' 25"	545.86	19.70	C154	22° 55' 10"	96.64	38.66	96.64				
C17	91° 13' 59"	25.00	39.81	C40	25° 47' 13"	185.00	83.26	C65	9° 16' 00"	598.85	96.86	C85	16° 05' 25"	75.00	49.15	C108	0° 55' 20"	720.86	11.60	C131	47° 09' 23"	50.00	41.15	C151	22° 55' 10"	96.64	38.66	96.64				
C18	48° 11' 23"	25.00	21.03	C41	18° 16' 33"	55.00	17.54	C64	3° 29' 39"	157.09	70.76	C66	44° 28' 26"	25.00	19.41	C89	16° 44' 12"	20.00	35.05	C111	3° 12' 41"	375.00	14.01	C135	6° 21' 25"	545.86	19.70	C154	22° 55' 10"	96.64	38.66	96.64
C19	91° 13' 59"	25.00	39.81	C42	84° 05' 00"	50.00	50.90	C67	29° 05' 22"	157.09	79.75	C90	24° 25' 54"	50.00	21.32	C113	3° 12' 41"	375.00	14.01	C135	6° 21' 25"	545.86	19.70	C154	22° 55' 10"	96.64	38.66	96.64				
C20	91° 13' 59"	25.00	39.81	C43	84° 05' 00"	50.00	29.57	C68	2° 28' 40"	790.90	4.52	C91	7° 01' 17"	20.00	14.71	C114	8° 05' 16"	375.00	52.94	C137	2° 32' 46"	420.86	18.70	C157	22° 55' 10"	96.64	38.66	96.64				
C21	90° 00' 00"	25.00	39.27	C44	84° 05' 00"	50.00	8.87	C68	44° 28' 26"	25.00	19.41	C92	11° 39' 44"	119.32	24.29	C115	2° 24' 07"	175.00	7.34	C138	2° 32' 46"	420.86	18.70	C157	22° 55' 10"	96.64	38.66	96.64				
C22	24° 42' 33"	198.85	85.76	C45	8° 31' 11"	198.85	8.87	C68	44° 28' 26"	25.00	19.41	C92	11° 39' 44"	119.32	24.29	C115	2° 24' 07"	175.00	7.34	C138	2° 32' 46"	420.86	18.70	C157	22° 55' 10"	96.64	38.66	96.64				
C23	40° 33' 33"	25.00	17.70	C46	2° 44' 52"	185.00	8.87	C68	44° 28' 26"	25.00	19.41	C92	11° 39' 44"	119.32	24.29	C115	2° 24' 07"	175.00	7.34	C138	2° 32' 46"	420.86	18.70	C157	22° 55' 10"	96.64	38.66	96.64				

0215-307 48/23
SUBDIVISION Boca Woods Country Club
BOOK 48
FLOOD ZONE B
GRID # C9
BE PAD
PUD NAME Boca Woods Country Club
PROJ 23
FLOOD MAP # 1008
ZONING RE
ZIP CODE 33423

Meridian Surveying and Mapping Inc.
WEST PALM BEACH, FLORIDA
DRAWN BY MEH
CHECKED BY SCALE
DRAWING NO. 82-P-051
BOCA WOODS COUNTRY CLUB PLAT 4